

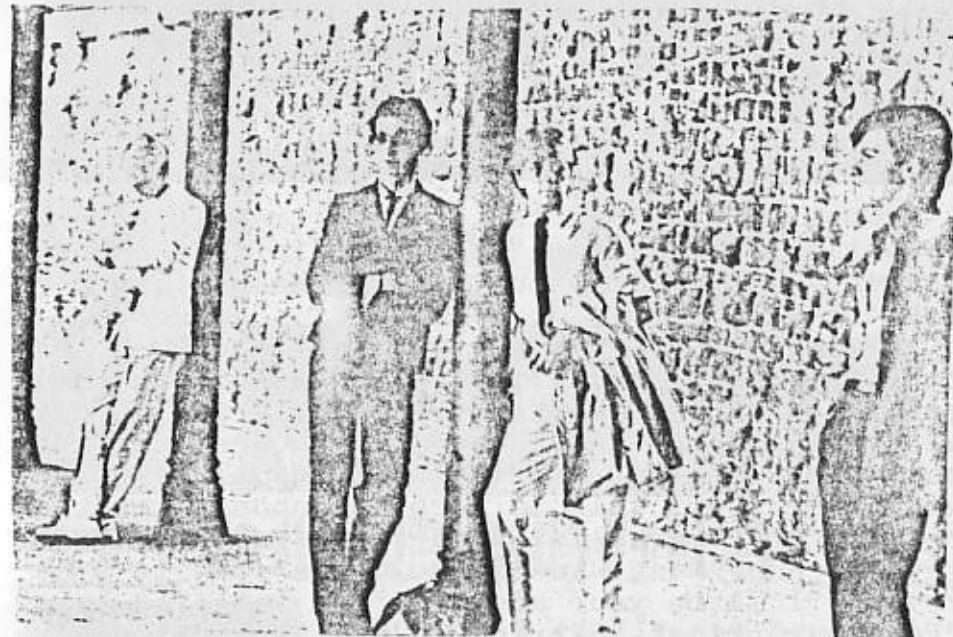
MAGNUM



Although lacking in height, Bob Catley made up for it with some very good vocals which came across well. The style of keyboard and guitar work along with the backing vocals give Magnum a more majestic sound and sets them apart from heavy metal bands.

They also played various tracks off their new album, "Chase The Dragon" and finished off with two encores, the second of which was the much requested "Kingdom Of Madness".

*Riders of the night
screaming hard upon my heels
Princely lord of chaos forging
black and fiery wheels
And the mother of Earth is being
widowed in my sight
Father of deception using wrong
instead of right.*



SUPREME MUSICAL ABILITY, COMBINED WITH GOOD LOOKS FOUND ONLY IN THE STAFF-ROOM OF VIDAL SASSOON, PLUS A GENIUS FOR SONGWRITING, SOON SKYROCKETED THESE WONDERFUL HUMAN BEINGS INTO CULT FIGURES. CROWDS STAYED AWAY IN DROVES IN ORDER NOT TO GET TOO MUCH OF A GOOD THING, BUT THE INEVITABLE WAS TO HAPPEN - STARDOM AND NO MONEY.

WISHING TO REMAIN UNSCARRED BY TODAY'S MEDIA, ARTZONE STAYED IN EUROPE, PREFERRING TO PLAY ONLY A MODERATE AMOUNT OF SMALL GIGS SUCH AS REBECCA'S, SMUGGLERS, EARL'S COURT, ETC.

A FAMOUS RECORD COMPANY BEGGED FOR MONEY FROM THEM, TO INCLUDE THEM ON THEIR STILL UNSOLD ALBUM, BUT THE BAND STUCK TO THEIR GUNS AND BOUGHT ANOTHER ROUND INSTEAD.

GORGEOUS GROUPIES, NOTICING THEIR NATTY FOOTWEAR, THREW THEMSELVES AT THEIR FEET, BUT THE BOYS HAD OTHER THINGS ON THEIR MIND - MUSIC.

MUSICIANS TO THE END - WHAT A SACRIFICE!

THE BAND FEATURE ON THE COMPILATION LP, "THE ART OF SELECTIONS" WHICH WILL BE ON SALE, ALSO A THREE TRACK CASSETTE, WITH A FREE PHOTO IF YOU HAPPEN TO HAVE YOUR EXTRA HANDY, AT THEIR GIGS.

WHO ARE ARTZONE

A GROUP GOING UNDER THE NAME OF "ARTZONE" SENT ME SOME INFORMATION ABOUT THEMSELVES PLUS A BRIEF HISTORY (?) - SO HERE IT IS: -

PETER ADSHEAD - LEAD VOCALS, PERCUSSION

STEVE WARWICK - GUITAR, EFFECTS

STEVE LOWE - BASS, VOCALS

DAVID W. - SYNTHESIZERS, STRING SECTION, BRASS SECTION, ETC.

PHIL HURST - DRUMS AND TOWEL

